



Deluxe Pontoon Furniture

Pontoon Furniture features state-of-the-art, high-impact plastic frames, the same quality required by leading boat manufacturers. High efficiency molded plastic bases feature vinyl finish and are scuff and mar resistant. Compression foam padding remains firm for all-day comfort and is plastic sealed to resist moisture. The upholstery is extra-heavy duty, 28 oz. marine-grade vinyl which is mildew-resistant and UV treated to prevent fading.

Wise Pontoon Furniture features a six-year warranty on the frame and a three-year warranty on upholstery.



ORDER NO.	DESCRIPTION	COLOR	PRICE
WSS WD120LS1011	Bucket Style Captain's Chair	Light Grey/Navy/Blue	\$280.59
WSS WD1001011	36" Lounge Seat	Light Grey/Navy/Blue	\$340.76



Plastic-Frame Lounge seats are constructed of high impact plastic with aluminum hinges. Polyurethane foam padding is covered with rugged marine grade vinyl upholstery which is mildew resistant and UV-treated to withstand fading. All vinyl covers are sewn with Dacron thread and upholstered with rust-resistant staples.

Deluxe Lounge Seat

Seat Height: 27-1/2"
 Seat Width: 18"
 Seat Length (Reclined): 66"
 Base Height: 10"
 Base Width: 13-1/2"
 Base Length: 38"
 Fits most 16' to 19' boats.



ORDER NO.	COLOR	PRICE
WSS WD7071PW	White	\$313.02
WSS WD7071PB	Lt. Blue	\$302.27
WSS WD7071PGY	Grey	\$313.02



Back to Back Seat Covers

- Keeps boat seats cool and clean in the hot summer sun
- Made of hand-washable polyester fabric
- Shirred elastic finish for a "Tailored" fit
- Material color is solid blue



ORDER NO.	PRICE
TAY 11997	\$44.82



Back to Back Lounge Seat Cover

- White Terry Cloth
- Breathable
 - Mildew resistant
 - UV protection
 - Completely washable
 - Elastic hem



ORDER NO.	DIMENSIONS	PRICE
TAY 11994	18"Hx20"Wx40"D	\$44.78



Helm Seat Covers

White Vinyl

- Mildew & water resistant
- UV Protection
- Water proof
- Air vents
- Heavy duty
- Elastic fitted bottom



ORDER NO.	DESCRIPTION	DIMENSIONS	PRICE
TAY 40230	Helm Cover	24"High x 24"Wide x 22"Deep	\$26.86



Swing Seat Covers

White Vinyl

- Mildew & water resistant
- UV Protection
- Water proof
- Air vents
- Heavy duty
- Draw string hem



ORDER NO.	DESCRIPTION	DIMENSIONS	PRICE
TAY 40240	Swing Seat Small	36"High x 36"Wide x 20"Deep	\$36.77
TAY 40245	Swing Seat large	36"High x 40"Wide x 20"Deep	\$37.33



High-Back Fold-Down Fishing Chair, Two-Tone

Plastic Frame

Seat Height: 21-3/4"
 Seat Width: 16"
 Seat Depth: 15"
 Aluminum hinges
 Less swivel.



ORDER NO.	DESCRIPTION	PRICE
WSS WD588PLS660	Gray/Navy	\$92.15
WSS WD588PLS661	Gray/Red	\$92.15
WSS WD588PLS664	Gray/Charcoal	\$92.15



Economy Fishing Chairs are built around state-of-the-art high-impact plastic frames, the same quality required by leading boat manufacturers. Wise Plastic-Frame Seats feature a six-year warranty on frame and a three-year warranty on upholstery. Swivel not included

Economy Plastic Frame Fold-down

Seat Height: 17"
 Seat Width: 16"
 Seat Depth: 13"
 Aluminum hinges, Less swivel.
 5-1/2" hole pattern



ORDER NO.	DESCRIPTION	PRICE
WSS WD734PLS660	Gray/Navy	\$69.68
WSS WD734PLS664	Gray/Charcoal	\$69.68
WSS WD734PLS710	White	\$69.68
WSS WD734PLS662	Sand/Brown	\$69.68
WSS WD734PLS713	Green	\$69.68



Fold Down Economy Boat Seat

Plush padded folding boat seat with hold down strap, standard aluminum hinges, rigid plastic frame and mounting screws.



ORDER NO.	DESCRIPTION	PRICE
SPM 1040623	Gray	\$55.28
SPM 1040629	White	\$55.28



Hunting/Fishing Fold-Down

Seat Height: 17-1/2"
 Seat Width: 15"
 Seat Depth: 14"
 With plastic seat frame and black steel hinges, less swivel.
 Denier Corduna nylon.



ORDER NO.	PRICE
WSS WD618PLS732	\$89.28



Camouflage Folding Plastic Seat

Advantage Max 4 Brown Shell

- State-of-the-Art, High-Impact Injected Molded External Plastic Frames
 - Compression Foam Padding
 - 500 Denier Cordura Covering
 - 6 Year Warranty on Frame, 3 Year Warranty on Upholstery
- Height: 15.75"
 Width: 20.25" Depth: 19.75"
 Seat Depth: 15.5"



ORDER NO.	PRICE
WSS WD139CLSB732	\$85.97



Deck Pro Seats

- Mounts on Any Standard Pedestal or Swivel
- State-of-the-Art, High-Impact Plastic Frames
- Compression Foam Padding
- Heavy-Duty 28 oz. Marine Grade Vinyl
- Mildew Resistant & UV Treated
- 6 Year Warranty on Frame, 3 Year Warranty on Upholstery

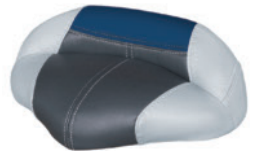
ORDER NO.	COLOR	PRICE
WSS WD112BP710	White	\$34.60
WSS WD112BP717	Gray	\$34.60
WSS WD112BP720	Charcoal	\$34.60



WD1466 Pro Seat

Grey/Charcoal/Navy
 Height: 5.25" Width: 15"
 Depth: 11" Seat Depth: 8.5"

ORDER NO.	COLOR	PRICE
WSS WD1466840	Grey/Charcoal/Navy	\$89.87



Fisherman Premium High Back Boat Seats

- State-of-the-Art, High-Impact Plastic Frames
 - Compression Foam Padding
 - Heavy-Duty 28 oz. Marine Grade Vinyl
 - Mildew Resistant & UV Treated
 - 6 Year Warranty on Frame, 3 Year Warranty on Upholstery
 - No-Pinch Aluminum Hinges
- Height: 22.5" Width: 17" Depth: 19.75"
 Seat Depth: 16"



ORDER NO.	COLOR	PRICE
WSS WD640PLS660	Gray/Navy	\$162.30
WSS WD640PLS661	Gray/Red	\$162.30
WSS WD640PLS664	Gray/Charcoal	\$162.30



Multi-Purpose Utility Seat

Add armchair comfort and good looks to any boat! Featuring molded seamless vinyl cushions and arms with resilient waterproof foam padding. No seams to split. Durable 1" anodized aluminum frame. Color: White.



ORDER NO.	PRICE	Overall Measurements	W	D	H
GAR 48103W	\$340.92	MODEL 48103	24"	19"	17-1/2"

446 SEATS



Folding Plastic Seat

Molded Fishing Boat Seat
 Injected Molded External Plastic Frame

- State-of-the-Art, High-Impact Plastic Frames
- Mildew Resistant & UV Treated
- Mounting Screws Included
- 6 Year Warranty on Frame,

Height: 15.25" Width: 20.25" Depth: 18.5"
 Seat Depth: 15.5



ORDER NO.	COLOR	PRICE
WSS WD138LS710	White	\$53.46
WSS WD138LS717	Grey	\$53.46



Fish Pro Folding Boat Chair

White in color, This chair will keep you comfortable and secure during those long days on the water. Offers a high back head rest, lumbar cushions, side supports to keep you centered and comfort zones, plus a dry storage pocket on the back. Mounting bolts included.



ORDER NO.	PRICE
SPM 1041606	\$207.58



ST2000-HD

White 2000 Chair

- Standard Seat with Molded Arms
- An Industry Favorite
- 24.5"D x 20.00"W x 16.00"H
- Cushion Set, Mounting Plate



ORDER NO.	PRICE
MOE ST2000HD	\$202.15



Economy Fishing Chair

Multi-purpose Surpass® Performance Resin chair, priced separately, but available with cushions (3301). Ideal as a replacement seat. Affords any boater the most economical and durable seating available. 17" D, 20-1/2" W, 18-1/2" H.



ORDER NO.	PRICE
TOD 971537L	\$92.61
Optional 3301 Cushion Set	
TOD 3301	\$93.70



Deluxe Rotational Molded Seat with Arms

Attractive weatherproof white shell with arms and removable white cushions for easy maintenance. Extra vented styling designed for many boating applications on most boats. Tee nut inserts are placed in bottom for attaching any Garelick base, swivel, slide or gimbal. Cushion color: White.



99200 Cushions only

Overall Measurements	W	D	H
MODEL 48050	22-1/2"	18"	19"
With Removable Cushions			

ORDER NO.	PRICE
GAR 48050	\$321.10
GAR 99200W	\$121.67



ProForm Boat Seats With Removable/Slip-On Upholstery

Shaped to provide ergonomic support. Sculptured, side-to-side contour helps stabilize the body in the seat. Molded in mounting holes for standard hardware and swivels. Drain holes in seat back and pan eliminate standing water to keep seat dry.



ORDER NO.	COLOR	PRICE
ATT 7012104	White	\$159.02



Heavy-Duty Bucket Seat with Arms

Welded Frame with Additional Support.
 Large comfortable cushioned 18-1/4" x 16" x 6" seats with 18-1/4" x 10-1/2" x 5" back. Utilize molded seamless vinyl seat back and arms with waterproof foam padding. No seams to split. Tough Anodized aluminum extrusions are used for back and arm supports. Color: 1-White.



Overall Measurements	W	D	H
MODEL48061	25-1/4"	19 1/2"	20"
Welded Frame			

ORDER NO.	PRICE
GAR 48061W	\$616.87



Rotational Molded Seat

A strikingly beautiful weatherproof white shell! Ergonomically designed with a high, supportive back and a deep wide contoured seat with vented styling. An extremely comfortable place to sit. This versatile, easy to maintain seat was created for many boating applications on most boats. Tee nut inserts are placed in bottom for attaching any Garelick base. Swivel, slide or gimbal. Cushion Color: White.



Shown with optional cushion

Overall Measurements	W	D	H
MODEL 48401 Without Cushions	20"	23"	19"
MODEL 99101 Cushions only			

ORDER NO.	PRICE
GAR 48401	\$184.30
GAR 99101W	\$131.09



Classic Folding Deck Chair

Durable, Sturdy, & Portable Seating

- High-density foam cushions covered with marine-grade, mildew resistant vinyl
- Double tubes for extra sturdiness
- Folds flat for compact storage



ORDER NO.	DESCRIPTION	PRICE
SPM 1080021	No Graphics	\$189.75
SPM 1080021EMB	Embroidered Sail Fish	\$193.51



Adjustable Helmsman's Chair

Features our exceptionally comfortable Commodore rotational molded chair. Then we add our Posi-Lock Chair Slide and locking, 360-degree Quad-Action seat swivel, which provides right-or left-hand lock access and flat-or 3-degree seat mount. Also includes corrosion-resistant, adjustable aluminum pedestal, which adjusts from 15 to 23". 2-piece cushions in white.



Base: 9" dia. 8 hole pattern.
Post 2-7/8" dia. Anodized

ORDER NO.	PRICE
SPM 1000202	\$301.92



Mariner Chair with Weatherproof Sewn Cushions

- Anodized frame resists the elements
- Beautiful sewn cushions and arm rests
- Durable 1" double leg frame provides extra stability
- Marine grade vinyl
- Chair folds for stowage, dual locks prevent folding during use



Overall width 26"; seat 19" wide 15.5" deep.

ORDER NO.	PRICE
GAR 4810661	\$343.67



Single Bucket Seat

Rotationally molded of Surpass® Performance Resin and upholstered in high quality, marine grade vinyl to withstand harsh marine conditions. Molded-in 1/4-20 T-nuts accept most marine hardware. Available in white only.



OD: 24" D, 24" W, 20-1/2" H
ID: 16-1/2" D, 17-1/2" W, 15" H

ORDER NO.	PRICE
TOD U851546	\$582.22



Designer Series Padded Deck Chair – Anodized Aluminum

- Lightweight, sturdy and very comfortable
- One-piece canvas back with 24" high frame
- 1" thick foam padded back and thigh support for added lumbar comfort
- Double leg and front cross bar frame for stability, easy to stow
- Beautifully sewn olefin woven fabric, tastefully appointed with embroidered code flag design and contrasting accent trim
- 1" diameter, corrosive resistant folding anodized aluminum tube frame, poly tips
- Varnished hardwood arms

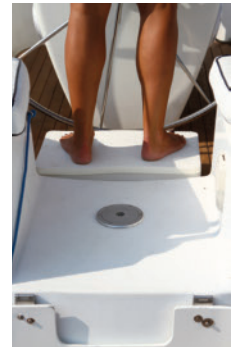


ORDER NO.	PRICE
GAR 3502962	\$126.29



See Board Helm Cushions

See boards are a unique and patented anti-fatigue mat and height adjustment system for standing at the helm. Addresses both back and leg pain issues along with visibility concerns. Firm enough for lasting comfort yet soft enough to absorb shock and vibration. The textured surface is even comfortable for barefoot boating. Constructed from 7/8" thick closed cell and anti-bacterial EVA foam. Resistant to oils, UV and saltwater. Seeboards attach to the boat deck using the exclusive Seeboards fastener that "clicks" on and off easily and securely. Uses only four 2" round discs with pressure sensitive adhesive.



ORDER NO.	DESCRIPTION	PRICE
TAY SB1224	12" x 24"	\$69.59
TAY SB1836	18" x 36"	\$139.18

Riser Panels

Height panels are purchased individually and are available in 2 sizes to match the Anti-fatigue Helm Cushions dimensions. Stack as many as necessary to achieve the desired height for optimal field of vision and ergonomics. Vertical adjustment is achieved by simply inserting Seeboards "height panels" between the deck and Helm Cushion fatigue mat. Change height panels quickly and easily. Height Adjustment Panels are stackable 1.5" thick white closed cell polyethylene foam that snap in between the deck and fatigue mat using Seeboards male/female fittings.



ORDER NO.	DESCRIPTION	PRICE
TAY SB1224R	12" x 24"	\$46.20
TAY SB1836R	18" x 36"	\$92.40



Classic Series Deck Chair - Anodized Aluminum Frame

- Lightweight, sturdy and very comfortable
- One piece canvas back with 24" high back frame
- Double leg and front cross bar frame for stability, easy to stow
- Beautifully sewn olefin woven fabric
- 1" diameter, corrosive resistant folding anodized aluminum tube frame, poly tips
- Varnished hardwood arms



ORDER NO.	PRICE
GAR 3503562	\$105.54

448 SEATS



Neptune II Leaning Post w/ Optional Seat Back

Designed for 13'-23' center console boats.

This is the perfect solution for retrofitting a current installation and new installations.

- Brite anodized aluminum pipe construction
- 4 welded-in rod holders
- Adjustable footrest
- Upholstered cushion seat
- Under-seat storage
- Solid construction, 3 Year Warranty
- Securely holds 4 rods & reels
- Foot rest for optimal comfort
- Weather-resistant upholstered padded vinyl seat always looks new
- Dry & compartmentalized storage
- Assembles in 15 minutes

Options: Adjustable width, seat back fits ALL leaning posts

Specifications:

Material: Anodized Aluminum, Upholstered seat cushion

Dim. (w/o back rest): 33"H x 22"L x 35"W

Dim. (w/back rest): 48"H x 22"L x 35"W



L1010031



Leaning Post shown with optional backrest #L1010021.

ORDER NO.	DESCRIPTION	PRICE
TAC L1010031	Neptune II Leaning Post	\$1,470.86
TAC L1010021	Optional Backrest	\$347.55



Deluxe Rotational Molded Chair

Attractive weatherproof white shell with removable cushions for easy maintenance. Mounted on 4 prong spider swivel casting on precision aluminum stanchion tubing, 2 7/8" diameter, that is pressed securely to 9" diameter cast aluminum base. All aluminum parts are Anodized. All fasteners are stainless steel. Base height: 12".
Cushion Color: White.



ORDER NO.	PRICE
GAR 48056	\$417.65

Overall Measurements	W	D	H
MODEL 48056	22 1/2"	18"	19"



Yachtman's II Deluxe

This package features our rugged, comfortable rotomolded chair; Positive Lock Chair Slide for easy positioning; 18" seat height and two-piece cushions in White.

Base: 9" dia.; 8" hole pattern.

Post: 2-7/8" dia. Anodized. 18" seat height



ABYC Approval:
Class AP= Class A Passenger

ORDER NO.	PRICE
SPM 1001414	\$288.12



Value Seat Package

Featuring easy maintenance, top quality and affordable price. Ideal for new installations or seat replacement.

Package includes: comfortable, molded polyethylene white seat – UV stabilized, Marine grade white vinyl covered, snap-on, removable cushions, and Anodized aluminum pedestal base; 360° locking aluminum swivel casting and 9" diameter support base.



ORDER NO.	PRICE
GAR 48409	\$312.43

Overall Measurements	W	D	H
With Adjustable Height 12"-18" Pedestal Base	20"	23"	19"



Skipper Chair Package

Package Includes

- Skipper Folding Chair Shell And Cushion Set Seat, Charcoal/Gray Dimensions: 18" H x 20" W x 17" D
- Post: 15" Explorer 09 Post Anodized With 9" Satin Base
- Trac-Lock™ Seat Mount (Rotates 360)

ORDER NO.	PRICE
SPM 1001003	\$168.18



Seafarer Chair Package

Package Includes:

- Seafarer Seat Shell (1060610-S)
 - Seafarer White Cushion Set (1045014)
 - 15" Fixed Height Pedestal With 9" Floor Base (1240015-SAL)
 - Anodized Post And Base
 - 2-7/8" Locking Trac-Lock Swivel (3100021-L1)
- Seat Dimensions: 17" H x 16" W x 14" D



ORDER NO.	PRICE
SPM 1000605L	\$219.49



Swing Back Seats

Base

- Double wall foam insulated base
- Molded polyethylene construction
- Use as a cooler or adapt to a live well
- Easy installation with molded mounting plates

Seat

- Heavy duty marine grade vinyl
- Mildew resistant thread
- Plastic frames
- Deep foam seat and back
- HD aluminum support slides fore and aft
- Seat back is cushioned on both sides



ORDER NO.	CAPACITY	DIMENSIONS	PRICE
MOE ST2200	76 Quart	18-1/2" D x 37" W x 34-1/2" H	\$698.74
MOE ST3000	50 Quart	17" D x 30" W x 34-1/2" H	\$649.64



Cooler Benchseat

With cushion seat and stainless steel arms.

ORDER NO.	DIMENSIONS	PRICE
WSS WD437SS	35"H x 34-1/4"W x 18"D	\$606.09





Jon Boat Seat Clamp

Adjusts from 8" to 20-1/2".
Unit also includes 7" x 7" swivel.

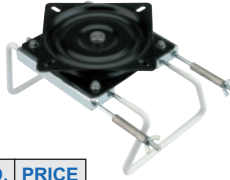


ORDER NO.	DESCRIPTION	PRICE
SPM 1104010	Clamp and Swivel	\$59.17
SPM 1100007	Swivel Only	\$15.58



Removable Swivel Clamp

Unique universal swivel clamp that holds secure to most board or tank type seats. Adjusts from 8" to 18" wide. Rotates 360° on heavily plated steel ball bearing swivel. All contact points are coated or have cushioned tips to protect the boat.

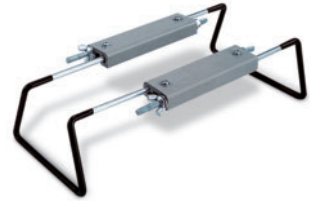


ORDER NO.	PRICE
GAR 75007	\$67.05



Boat Seat Clamp

Less swivel.
Adjusts from 8" to 19".



ORDER NO.	PRICE
WSS WD80	\$42.05



Economy Seat Pedestal

- 7" square base & seat mount
- Rugged, all steel construction
- E-Coated, corrosion-proof finish for all weather conditions
- For use with Standard Boat Seats



ORDER NO.	SIZE	PRICE
SPM 1561105	7"	\$27.31
SPM 1561106	13"	\$32.87



Adjustable Seat Pedestal

- 7" x 7" square base & seat mount
 - Rugged, all steel construction with E-Coated protection
 - Adjusts from 12" to 18" (in 2" increments)
- For use with Standard Boat Seats



ORDER NO.	PRICE
SPM 1561107	\$36.19



Ball Bearing Swivel

Black powder coat. Swivels 360°. Fits most seats.



ORDER NO.	PRICE
WSS WD10	\$13.66



Stainless Steel Boat Seat Swivel

- Heavy duty for offshore market
- 304 stainless steel with stainless rivet
- Rotates 360° fits most standard seat hole patterns
- Self-lubricated non-corrosive poly swivel bearings
- Size: 7" x 7"



ORDER NO.	PRICE
GAR 75020	\$34.59



Seat Swivels

360° steel ball bearing swivel, heavily plated, to resist corrosion. Size: 6" x 6".



ORDER NO.	PRICE
GAR 75016	\$20.26



Easy Mount Swivel

Larger bottom half, allows easy mounting from the top side. 360° steel ball bearing swivel, heavily plated, to resist corrosion. Width: 7 3/4".



ORDER NO.	PRICE
GAR 75018	\$32.57

450 SEATS



Kingpin Swivels

All rotate a full 360 degrees, and provide a 3-degree lean-back angle for optimum seating comfort! E-coated to prevent rust.



ORDER NO.	DESCRIPTION	PRICE
SPM 1615201EC	Swivel w/spring	\$25.00
SPM 1615204EC	Swivel w/o spring	\$24.59



Manual Adjustable Pedestal

- Adjusts from 22" to 31"
- Posi-lock lever secures post at desired height
- Allows swivel to rotate 360 degrees
- Use with any KingPin Seat Mount (sold separately)



ORDER NO.	PRICE
SPM 1613402S	\$70.54



Lock'N-Pin Seat Mounts, Posts and Bases

The 3/4" system gives you outstanding, economical performance and prevents unintentional detachment for seat mounts, posts, and bases

Type B: Slow Speed Not to be used at Helm/Driver position. For speeds not to exceed 5 mph

Not recommended to interchange with other manufacturers' products.



ATT 1002

ATT 1002S

ATT SP2144

ATT SP3204

ORDER NO.	DESCRIPTION	PRICE
Seat Mounts		
ATT 1002	Zinc Plated Steel, 3° Tilt, 2-3/4" Steel Pin, w / Spring	\$17.27
ATT 1002S	Zinc Plated Steel, 3° Tilt, 2-1/2" Steel Pin	\$21.78
Fixed Height Posts		
ATT SP2114	11" Hgt, 1.50" Dia., Brushed Aluminum, Non-Threaded, Steel Pin	\$23.40
ATT SP2134	13" Hgt, 1.50" Dia., Brushed Aluminum, Non-Threaded, Steel Pin	\$26.49
ATT SP2164	16" Hgt, 1.50" Dia., Brushed Aluminum, Non-Threaded, Steel Pin	\$31.71



Removable Pedestal

This is a unique 2-position, 3-part system that allows full upright seating while fishing or remove the pedestal and insert the seat mount into the base for compact storage and increased driver visibility while the boat is underway. 7" x 7" base, 1-3/4" diameter post.



ORDER NO.	HEIGHT	PRICE
SPM 1615431	11"	\$103.58
SPM 1615433	13"	\$104.61



Kingpin Removable Pedestals

The Kingpin pedestal is Springfield's first-generation plug-in seat pedestal, but it remains popular with bass boaters. The Kingpin is a 2-position Hi-Lo pedestal that allows a bass boat seat to be used in a Hi position for fishing, and a Lo position while the boat is underway. From the bottom of the swivel seat mount, and also the plug-in post, extends a 3/4" diameter pin of plated steel. Similarly, both the floor-mounted base and the top of the post contain a socket with a corresponding diameter of 3/4". This allows the seat mount to fit into the top of the post – which creates the Hi position – or directly into the base—where it is in the Lo position.

Kingpin Posts

Made of aluminum with satin finish. Pin extends 2 1/2" below deck.

ORDER NO.	DESCRIPTION	PRICE
SPM 1610411S	11" post	\$26.55
SPM 1610413S	13" post	\$28.88
SPM 1610415S	15" post	\$33.28



Power-Rise Adjustable King Pin Pedestal

- Adjust height to be used as seat or leaning post
- Rotates 360°

Adjustable 16"-22-3/4"
(use with any Standard KingPin base)



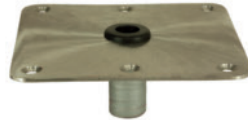
ORDER NO.	PRICE
SPM 1612401S	\$154.94



Kingpin Bases

Stainless Steel Base

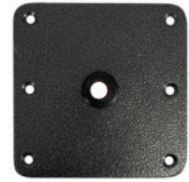
7" x 7" base



ORDER NO.	PRICE
SPM 1620001	\$66.64

Powder-Coat Base

Exceptional value! Better corrosion resistance than stainless steel at less cost! 7" x 7"



ORDER NO.	PRICE
SPM 1620018	\$48.31



Swiv-Eze Base Plates, Aluminum

- The 3/4" system gives you outstanding economical performance
- The design is proven by decades of experience

ORDER NO.	DESCRIPTION	MOUNTING HOLE SIZE	PRICE
ATT SP68R4	Pedestal base 8" round	2.75"	\$59.68
ATT SP67749	Pedestal base 7" square	3.5"	\$47.07



Sure Mount Seat Bracket

15" wide with 7" travel. All aluminum.

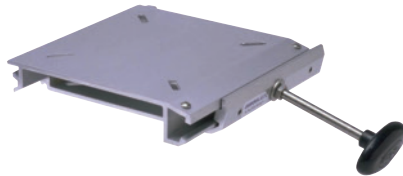


ORDER NO.	PRICE
WSS WD70	\$63.80



Low Profile Seat Slide

Allows helm or boat seats to adjust fore and aft 6". Helps to provide maximum seating comfort. Slide mounts under seat, in between seat and pedestal base. Unique aluminum extrusions and convenient handle assures positive and solid locking at any position. Can be used with spider type castings for 360° swivel action or just as a slide. All aluminum parts are Anodized, a protective finish which helps prevent salt water corrosion and weathering. (Spider swivel casting is not included.) Dimensions: 8 1/2" width, 8" length, adds 1 5/8" to height.



ORDER NO.	PRICE
GAR 75080	\$128.39



Low Profile Seat Slide

Allows helm or boat seats to adjust fore and aft 9 1/2". For use with Deluxe Rotational Molded Seat Models 48050, 48055, 48056, 48400, 48401 and 48402 or any seat where additional travel and reinforcement to seat bottom is desired. Helps to provide maximum seating comfort. Slide mounts under seat, in between seat and pedestal base. Unique aluminum extrusions and convenient handle assures positive and solid locking at any position. Can be used with spider type castings for 360° swivel action or just as a slide. All aluminum parts are Anodized, a protective finish which helps prevent salt water corrosion and weathering. (Spider swivel casting not included) Dimensions: 8-1/2" width, 13-1/4" length, adds 1-5/8" to height.



ORDER NO.	PRICE
GAR 75081	\$151.18



EEz-In® Combination Seat Slide and Swivel Spider

- Provides smooth fore and aft travel and 360° seat rotation, Wobble-Free Design/Operation.
- Adds comfort and stability for any swivel boat seat.
- Mounts underneath seat and on top of pedestal stanchion.
- Compatible with any 2 7/8" diameter tube.
- Convenient handles provide solid locking at any position.

Meets ABYC-H31, Type A Seating Standards as well as extensive Garelick performance standards.

Specifications: Anodized aluminum stainless hardware. Adds 1-5/8" to height.

Hole Pattern: 75082: 5"x5";
75083: 5"x12"



* Required on Roto Molded Seat Models

ORDER NO.	FORE & AFT TRAVEL	DIMENSIONS	PRICE
GAR 75082	6"	8.5" W x 8" L	\$152.31
*GAR 75083	7"	8.5" W x 13" L	\$167.82



The Millennium 2000 (SS) Seat Slide System

- Fits all smooth 2-7/8" diameter stanchion pedestal seat bases.
- Smooth positive lock action slide – convenient spring loaded lock and release lever – wobble-free when locked.
- Secondary twist control drag handle affords selective drag for rotation.
- Internal Delrin bearing cup with smooth core to accept all smooth tube series pedestals.
- Positive quick lock engages immediately – drop the lever and lock is actuated.
- Positive stop lock seat slide cam.



ORDER NO.	PRICE
GAR 22000	\$148.44



238 Series Seat Mounts, Posts and Bases

Bases

Corrosion-Resistance

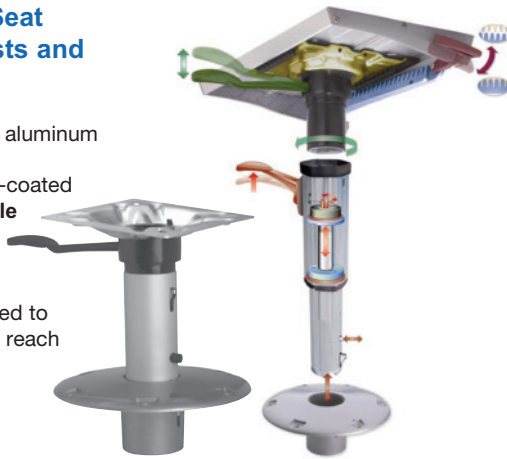
- Pedestal tubes are hard-anodized aluminum
- All springs are stainless steel
- Bases are bead-blasted and clear-coated

Smooth Movement Without Wobble

- Slider has gear-tooth lock mechanism; locks solidly, disengages easily
- Handles are ergonomically designed to be easy on the hands and easy to reach

Type A: Operator, OK for Helm/Driver position

Not recommended to interchange with other manufacturers' products.



238 Series 13" Pedestal Kit



13" Post, 9" Round Base, Black Powder Coat Seat Mount

- Strength, style and corrosion-resistance to the core:
- Pedestal tubes are hard-anodized aluminum
- All springs are stainless steel
- Bases are bead-blasted (to close aluminum porosity) and clear coated
- Smooth movement without wobble
- Slider has gear-tooth lock mechanism; locks solidly, disengages easily
- Slider rides smoothly on acetal linear bearings
- Clean style, ergonomic design
- Styling is clean and uncomplicated
- Handles are ergonomically designed to be easy on the hands and easy to reach



ORDER NO.	PRICE
ATT 238137	\$138.26

ORDER NO.	DESCRIPTION	PRICE
Seat Mounts Without Slider		
ATT 2381522	Plated Steel, 3° Tilt, Right Handle	\$67.29
Fixed Height Extension Posts (Height measured from deck to top of Seat Mount)		
ATT 2386102	10" Height	\$55.10
ATT 2386122	12" Height	\$69.18
ATT 2386142	14" Height	\$78.27
Adjustable Height Power Pedestals (Height measured from deck to top of seat mount)		
ATT 2385122	13" to 16-1/2" Height	\$211.65
Socket Bases		
ATT 2383122	Aluminum, 9" Round	\$71.52



Fixed Height Bell Pedestal With Seat Mount and Slide

15-1/2" H, Satin Anodized Post, 9" Anodized Machine Base, 3° Tilt

- Ergonomic positive-locking handles with stainless steel components
- PowerLock™ Multi-Action handle controls both swiveling and height adjustment.
- TwinGlide™ Bushing ensures smooth operation and maximum stability at any height position
- EZ-Lock™ CAM-Action makes seat removal simple.
- Heavy duty 2-7/8" posts and 9" diameter machined bases are engineered for strength and safety in harsh off-shore conditions
- Type A: Operator Ok for Helm/Driver position



ORDER NO.	PRICE
ATT 861552TP4	\$207.46



Aluminum Adjustable Seat Base

Adjustable height feature allows seat to raise or lower and lock at desired height for added seating comfort! 4 prong spider swivels 360° easily on precision 2-7/8" diameter, aluminum stanchion tubing. Stanchion is pressed securely to a 9" diameter cast aluminum base. Also ideal for use as table pedestal.



MODEL 75035 – From 12" to 17"
MODEL 75028 – From 18" to 24"

ORDER NO.	PRICE
GAR 75035	\$175.86
GAR 75028	\$184.06



Anodized Aluminum Seat Base

Construction is the same as our 750 Series with the added feature of a protective polished Anodized finish which helps prevent salt water corrosion and weathering.

ORDER NO.	OVERALL HEIGHT	PRICE
GAR 75230	12"	\$133.81
GAR 75232	18"	\$144.13
GAR 75234	30"	\$166.37



MODEL 99023
Spider Top Only

ORDER NO.	PRICE
GAR 99023	\$55.92



Fixed Height (Smooth Series) Pedestals

- Compatible with Garelick hardware
- Provides solid base of support for a variety of seat hardware
- Mounts Garelick fore and aft seat slides and 360° swivel spider combinations
- I.D. 2-7/8"
- Fore & Aft Seat Slides: 22000, 75080, 75081, 75082, 75083
- Swivel Spiders: ,99023, 99036

ORDER NO.	OVERALL HEIGHT	PRICE
GAR 75430	12"	\$87.52
GAR 75432	18"	\$97.26
GAR 75434	30"	\$120.58





360° Swivel Positive Seat Mount Top (Smooth Series)

- Provides full circle rotation for seating
- Secondary twist control drag affords selected drag for rotation
- Internal delrin bearing cup engages in 10° increments for positive lock when tightening
- Dual quick lock handles – lever actuated, provides stable, wobble-free support; Positive quick lock engages immediately
- Fits all Garelick smooth series, 2-7/8" (7cm) diameter Stanchion pedestal seat bases
- Meets ABYC-H31, Type A Seating Standards, as well as extensive Garelick performance standards



ORDER NO.	PRICE
GAR 99036	\$81.58



Detachable Stanchion Plates

Solid Plate Type. Available with all model bases. Anodized aluminum plate mounts to deck surface. Plate is 9" round. Complete with 3 stainless steel cap screws and Allen wrench. Adapts to all model bases.



ORDER NO.	PRICE
GAR 75056	\$72.40



Detachable Stanchion Plates – Ring Type

Sandwiches deck for positive reinforced installation. Allows base and seat to be removed from mounted position. Anodized aluminum 9" diameter, 3/8" thick complete with ring. 3 stainless steel cap screws, Allen wrench and 2 backing brackets. Adapts to all model bases.



ORDER NO.	PRICE
GAR 75057	\$106.12



Cockpit Side Coaming Bolster

- Replace or add comfort and padded protection to inside coaming wall area of any cockpit
- Flexible PVC substrates allow bolster to conform to subtle contour of coaming
- Easy to install-with unique hidden stainless clips and screws
- Marine grade UV quilted vinyl



ORDER NO.	DESCRIPTION	PRICE
GAR 48548	48" L x 5" H x 1.75" Thick	\$129.01
GAR 99136	Upholstery clip	\$3.14



Trac-Lock III

Pedestal Swivels

Exclusive Springfield features allow pedestal swivels to lock from right OR left. That's 4 settings in one swivel. ABYC Approval: Class AD=Class A driver.



ORDER NO.	DESCRIPTION	PRICE
SPM 1100031L	Fits 2-3/8" dia. post	\$49.06
SPM 2171008	Bushing for 2 3/8" (old style with replaceable bushings)	\$14.69
SPM 2171009	Bushing for 2 7/8" (old style with replaceable bushings)	\$14.89



Tube Mount Fishing Rod Gimbal

Sand cast brass chrome-plated. Designed to be mounted onto 1" chair tubing. Designed with 4-way swiveling action.



ORDER NO.	PRICE
SDG 325510	\$45.15



Swivel Stanchion Footrest

Solid aluminum casting step, fits 2-7/8" stanchion. Adjusts for desired height and swivels as required. Can be locked in any position. No Slip Strip surface provided for footrest surface. Eliminates dangling feet while piloting.



ORDER NO.	PRICE
GAR 75004	\$173.50



Replacement Tips

For 1" diameter deck chair legs.



ORDER NO.	DESCRIPTION	PRICE
GAR 76010	Package of 4, Single Tips – White Poly	\$10.02
GAR 76011	Package of 4, Single Tips – Rubber	\$10.02
GAR 76012	Package of 2, Double Leg Tips – White Poly	\$10.02



Rubber Chair Tips

No-marking rubber chair tips are great for use on deck chairs, boarding ladders, boat hooks, etc. Sold in packages of 4 tips.



ORDER NO.	SIZE	PRICE
TAY 96024	Fits 7/8" Tubing	\$9.59
TAY 96025	Fits 1" Tubing	\$10.08